

Product data sheet

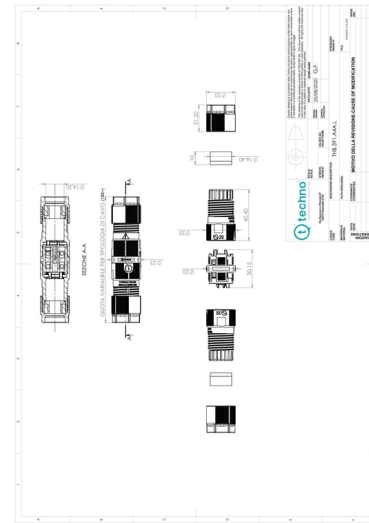
Techno

Mini joint connector, Scew with wire protector



THB.391.A3C.L

<https://ac-solutions-2024.digitaledoeners.be/nl/product/thb391a3cl>



Specificaties

General Characteristics

| | |
|---------------------------|----------------------------|
| Series | TEETUBE |
| Subseries | TH391 |
| Number of contacts | 3 |
| Product shape | I |
| Contact terminals | Screw |
| Cable section | 0,25 - 2,5 mm ² |
| Min-max cable diameter | 7,0 - 13,5 mm |
| Cable entries/exits | 2 ways |
| Protection degree | IP68/IP69 |
| Protection degree details | IP68 (30m/2h) |
| Max. temperature | T85 |
| Tracking index | PTI 250 |

Electrical parameters

| | |
|---------------|-------|
| Rated current | 24 A |
| Rated voltage | 450 V |

Material

| | |
|-------------------|-----------------|
| Connector housing | PA66 GF UL94 V0 |
|-------------------|-----------------|

Product data sheet

Techno

Mini joint connector, Scew with wire protector



| | |
|---------------------------------|--------------|
| Cable glands | PA66 UL94 V2 |
| Grommets | TPE |
| Co-moulded seals | TPE |
| Contact screw terminals | Brass |
| Standard/Piercing screws | Steel |