

# CONNECTORS OVERVIEW

A complete range of innovative solutions  
for any industrial application

# THE TRADITION OF INNOVATION SINCE 1945

ILME designs and manufactures complete solutions for industrial connections.

Headquartered in Milan and with subsidiaries in the key countries driving the progress of automation, ILME is an industry leader in the main world markets.

People are vital to success and growth at ILME, sharing a passion for innovation, utmost responsibility and participation.

The Company is committed to developing technology in the areas that mostly impact the future of the industries it serves: safe and high quality wiring, research on the most suitable materials, rapid delivery time and readily available services, while striving for energy saving and environmental protection.



# COMMITMENT TO INDUSTRY



Technological innovation is the main pillar of ILME's competitiveness.

In the electrical connection sector of industrial automation, characterized by the need for top performance and reliability, ILME is a recognized leader with its own patents and a global benchmark supplier to major companies worldwide.

ILME offers a fully integrated range of high-quality products and services for every type of connection, designed to suit any application requirement.

## FIELDS OF APPLICATION



✓  
AUTOMATION



✓  
MARINE



✓  
ENERGY



✓  
OUTDOOR



✓  
AIRPORTS



✓  
LIGHT  
& SOUND



✓  
AGRONOMY



✓  
FOOD  
& BEVERAGE



✓  
HEAVY  
VEHICLES



✓  
CHEMICAL

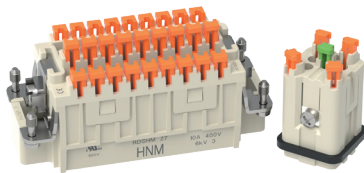


✓  
PLASTIC



✓  
RAILWAY

# TECHNOLOGY PORTFOLIO



## SQUICH® series

### THE CONNECTOR FOR EVERYONE

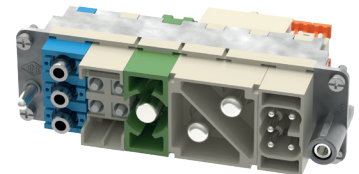
Quick, easy, and safe connections without tools, saving up to 50% of wiring time and vibration-proof. Available in all sizes, from the most compact to the highest density.



## AXYR® series

### WIRING IN AXIS

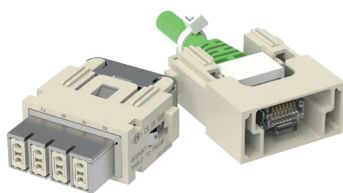
Easy, tool-less, and compact spring push-in termination, which equals the crimp connectors in high density. Resistant to mechanical stress and vibrations.



## MIXO series

### BUILD YOUR CONNECTOR

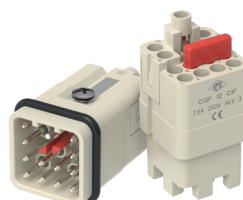
A modular and flexible system that allows the design of custom connectors. Easy to handle, quick to assemble and a space-saving solution.



## DATA connectors

### ETHERNET-BASED RELIABILITY

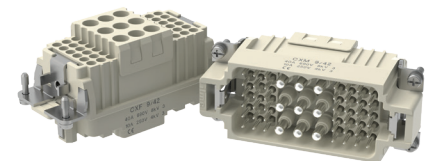
Standardized, compact modules for high-speed, shielded Ethernet connection.



## CQ 12 inserts

### COMPACTNESS MEETS PERFORMANCE

Compact solution for high density needs. Reliable, 16 coding possibilities perfect for small motors with bridges for star/delta configuration.



## COMBINED connectors

### ALL-IN-ONE SOLUTION

Space-saving design combining power and signal connections. Vibration resistant crimp connection ensures reliable performance in any automation environment.



### C-TYPE series

#### THE CLASSIC CHOICE

Enclosures designed for reliable and durable connections: stainless steel levers, profiled gaskets, and a wide range of applications.



### IL-BRID series

#### SOFT CLOSING, STRONG HOLD

The perfect combination of stainless steel and thermoplastic material working together. Also available with self-closing covers.



### V-TYPE series

#### EXTRA TOUGH

Enclosures with vertical closing levers in stainless steel to ensure a stable and IP67 watertight seal.



### 21.21 series

#### THE MOST COMPACT

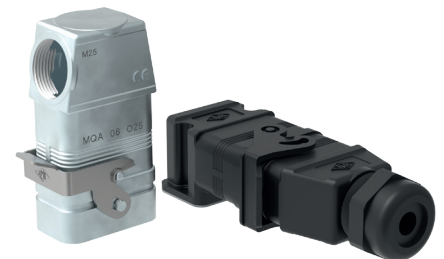
Small sized thermoplastic and metallic enclosures for standard or aggressive environments. Custom coding rings and clips are available.



### CZ7 / MZ7 series

#### RIGID COUPLING

Sizes 49.16 and 66.16 with rigid stainless steel lever for IP67 sealing. Recommended where there is vibration or heavy cables.



### CQ 08 series

#### COMPACT SIZE, BIG PERSONALITY

Metal and insulating enclosures, size 32.13. Space-saving design for handling any wiring combination in tight spaces.



## W-TYPE series

### A CORNERSTONE AGAINST CORROSION

Anticorrosive coating for aggressive environments, equipped with special gaskets, pegs, and stainless steel levers to ensure maximum performance.



## E-Xtreme® series

### PROTECTION AND BEYOND

ILME patented titanium plasma protection. Corrosion-proof enclosures, resistant for up to 3 000 hours in salt spray tests.



## IP68 series

### THE DIVING MASTER

Corrosion-proof aluminum enclosures, combining IP68 protection, EMC shielding and high mechanical robustness.



## HNM series

### IN AND OUT

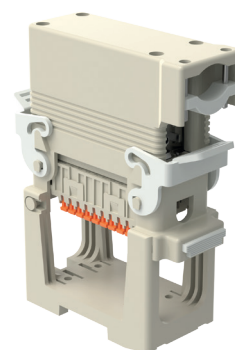
Enclosures and inserts with special anti-friction treatment, tested up to 10 000 mating cycles.



## CENTRAL LEVER series

### EASY ACCESS FOR ROBOTICS

Enclosures designed for industrial applications with limited installation space. Easy handling granted by the locking device with a single stainless steel lever.



## COB series

### FUNCTIONALITY COUNTS

For multipole connectors inside cabinets, allowing fast mounting and easy wiring control thanks to the tilting mechanism.

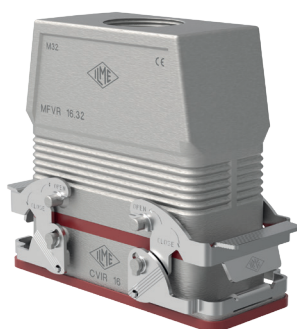


## BIG series

### THE SPACE YOU HAVE ALWAYS NEEDED

Plenty of space to allow for easy wiring and even the installation of PC boards inside the hood.

The ideal solution for XXL requirements.



## 180 °C series

### THE HEAT SHIELD

Heat-resistant gaskets and stainless steel levers. To be used with PPS inserts to withstand temperatures up to 180 °C.



## EMC series

### NO INTERFERENCES

Enclosures with special conductive gaskets, ensuring highly effective EMC shielding.



## T-TYPE series

### THE HIGH-END PLASTIC SOLUTION

Insulated thermoplastic enclosures for standard and aggressive environments: mechanically robust, lightweight, antistatic and corrosion-resistant.



## HYGIENIC series

### SAFE FOR FOOD

Thick and solid thermoplastic enclosures with special gaskets and metal-detectable levers. Resistant to most chemicals and cleaning solutions used in the food industry. ECOLAB® approved.

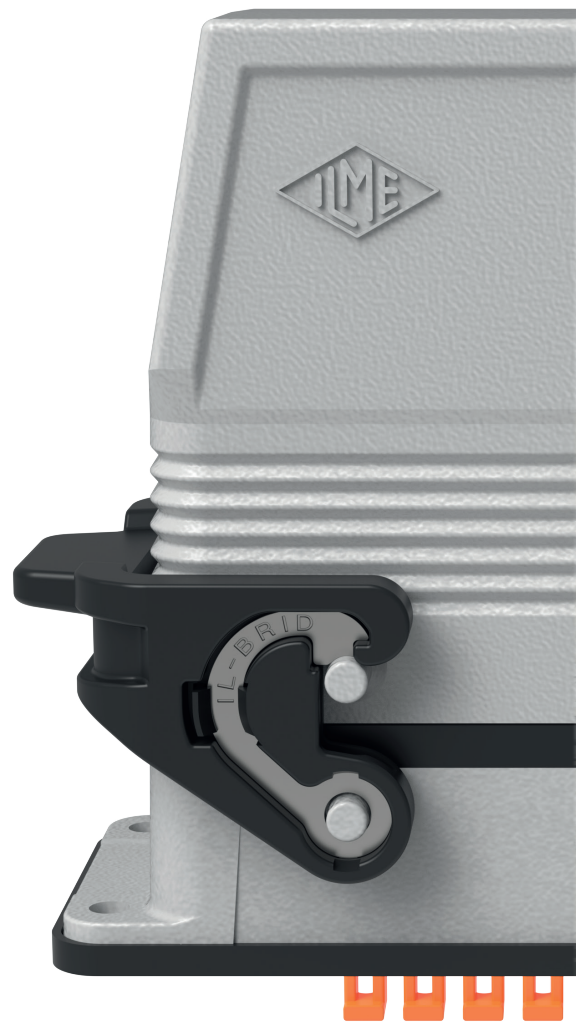


## LS-TYPE series

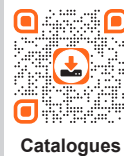
### ON STAGE

Completely black in color, the LS-TYPE is the ideal solution for the entertainment industry, designed to house all types of connector inserts.





**ILME S.p.A.**  
Via Marco Antonio Colonna, 9  
20149 Milano - Italy  
[www.ilme.com](http://www.ilme.com)



Catalogues

XDGVANCN 325



8 015747 186858